

# SPECIFICATIONS

## Electrical

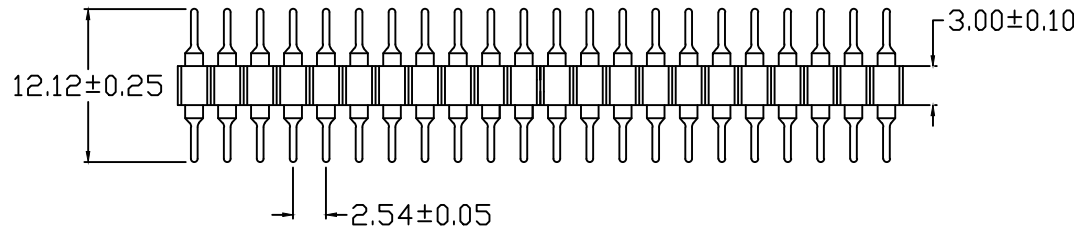
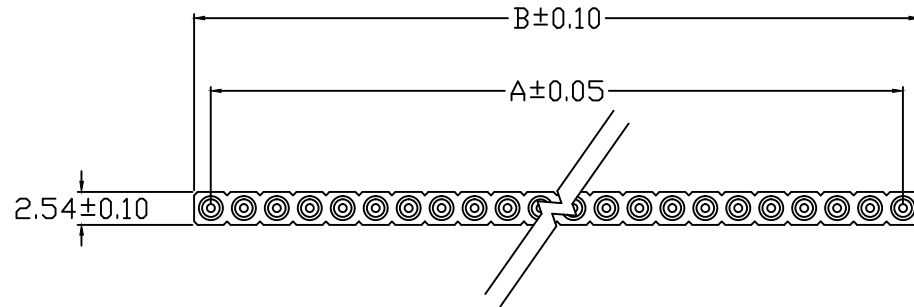
Current Rating: 3 Amps  
 Insulator Resistance:  $>10^6$  M at U=100V  
 Contact Resistance: 4m/Contact  
 Operating Voltage: 60V

## Material

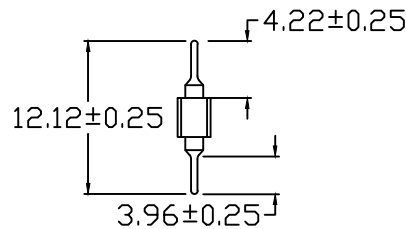
Contact Material: Clip: Beryllium Copper  
 Outer Sleeve: CuZn38Pbz  
 Insulator Material: Glass Filled Polyester  
 Valox UL 94V-0 (Black)  
 Plating Material (Pin): Tin Plated: 2um/80u" Nickel  
 5um/200u" Tin-Lead  
 Gold Plated: 2um/80u" Nickel  
 0.25um/10u" Full Gold  
 Plating Material (Clip): 2um/80u" Nickel  
 (Contact) Gold and Tin Plating

MSD X XX P T G D 3 -FG  
 1 2 3 4 5 6 7 8 9 10

- Series No. MSD
- Type: S=Single Row, D=Dual-Sided
- Environmental: E=RoHS Compliant
- Number of Contacts: 01-40
- Contact Type: P=Non Distribution
- Contact Plating: See Spec. Above
- Row Spacing: G=2.54 mm
- Type: D=Machined Type
- Insulator Color: 3=Black
- Environmental: FG=High Temp RoHS Compliant



PIN	A(MM)	B(MM)	PIN	A(MM)	B(MM)
1		2.54	21	50.80	53.34
2	2.54	5.08	22	53.34	55.88
3	5.08	7.62	23	55.88	58.42
4	7.62	10.16	24	58.42	60.96
5	10.16	12.70	25	60.96	63.50
6	12.70	15.24	26	63.50	66.04
7	15.24	17.78	27	66.04	68.58
8	17.78	20.32	28	68.58	71.12
9	20.32	22.86	29	71.12	73.66
10	22.86	25.40	30	73.66	76.20
11	25.40	27.94	31	76.20	78.74
12	27.94	30.48	32	78.74	81.28
13	30.48	33.02	33	81.28	83.82
14	33.02	35.56	34	83.82	86.36
15	35.56	38.10	35	86.36	88.90
16	38.10	40.64	36	88.90	91.44
17	40.64	43.18	37	91.44	93.98
18	43.18	45.72	38	93.98	96.52
19	45.72	48.26	39	96.52	99.06
20	48.26	50.80	40	99.06	101.6



APTOS Technology CONFIDENTIAL  
 This document, and all information it contains, are the confidential, proprietary property of APTOS Technology. Disclosure, duplication or distribution of this document, or any information it contains, in whole or part, without prior written permission from APTOS Technology is strictly prohibited

GENERAL TOLERANCE UNLESS OTHERWISE SPECIFIED		AP APTOS TECHNOLOGY	
XXX. ± X	.XX ± 0.2	REV.	A
XX. ± X	.XXX ± X	DATE	11/23/10
X. ± 0.5	X' ± 5'	CHECKED	
.X ± 0.3	.X' ± 5'	APPROVED	
		UNIT	mm
		SIZE	A4
		MSD Series	
		2.54 mm Dual-sided Mach. Socket	
		PRODUCT NO. MSDXXXPTGD3-FG	
		FILE NAME: MSD LF APD.DWG	

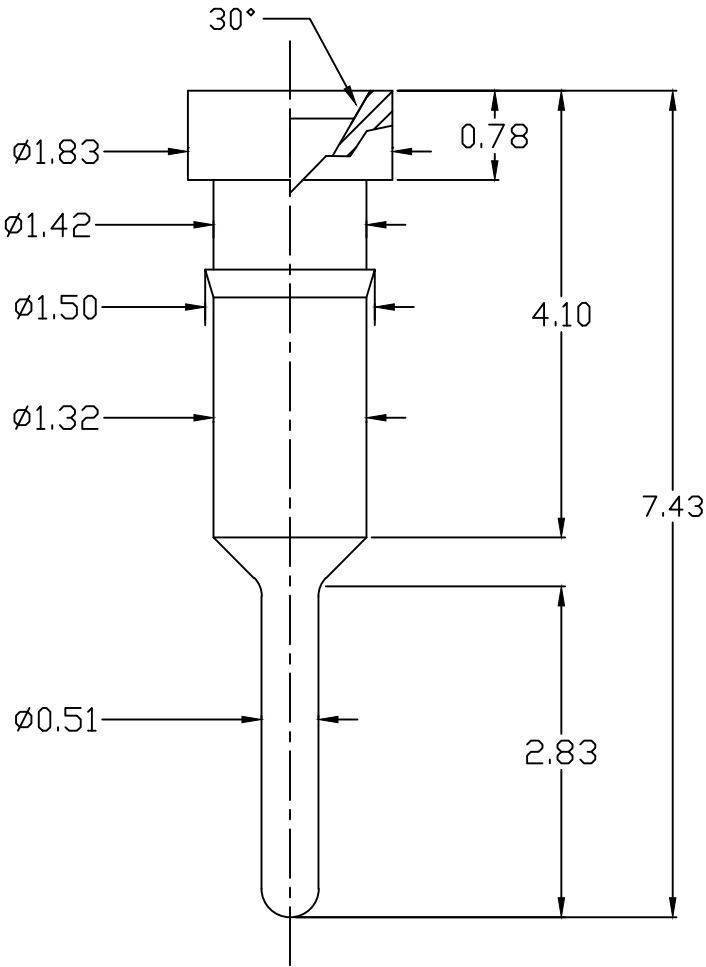
SPECIFICATIONS

Electrical

Current Rating: 3 Amps  
 Insulator Resistance: >10<sup>6</sup>M at U=100V  
 Contact Resistance: 4m/Contact  
 Operating Voltage: 60V

Mechanical

Average Insertion Force: < 3N  
 W/Steel Pin Dia. 0.41mm:  
 Average Withdrawal Force: > 0.4N  
 W/Steel Pin Dia. 0.41mm:  
 Mechanical Life Cycle: Min. 200  
 Operating Temperature: Gold Plated:  
 (Continuous) -55°C to +125°C  
 -67°F to +257°F  
 Tin Plated:  
 -40°C to +105°C  
 -40°F to +221°F  
 Soldering Temperature: +260°C for 10sec Max.  
 +500°F for 10sec Max.



APTOS Technology CONFIDENTIAL  
 This document, and all information it contains, are the confidential, proprietary property of APTOS Technology. Disclosure, duplication or distribution of this document, or any information it contains, in whole or part, without prior written permission from APTOS Technology is strictly prohibited

GENERAL TOLERANCE UNLESS OTHERWISE SPECIFIED	
XXX. ± X	.XX ± 0.2
XX. ± X	.XXX ± X
X. ± 0.5	X. ± 5'
.X ± 0.3	.X ± 5'



REV. A	DRAWN	11/23/10	MSD Series
DATE 11/23/10	CHECKED		2.54 mm Machine Socket Pin
SCALE 1:1	APPROVED		PRODUCT NO. MSDXXXPTGD3-FG
UNIT mm		SIZE A4	FILE NAME MSD PIN LF APD.DWG